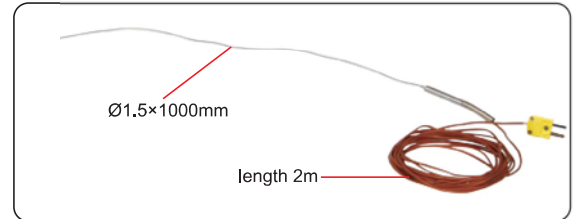
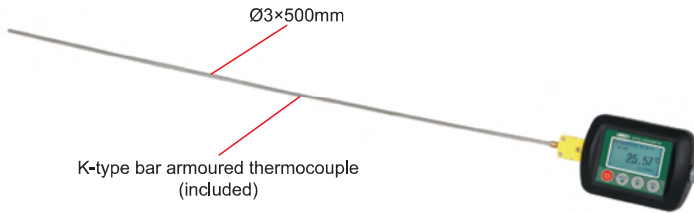


# DIGITAL THERMOMETER (HIGH TEMPERATURE TYPE) CODE 0324-DT11

- Can measure the temperature of liquid, steam and gas
- Real time/MAX/MIN/AVG temperature display
- Built-in gravity sensor, automatic horizontal or vertical screen display
- Display backlight
- Automatic power off
- Software is included: on-line monitoring, data storage



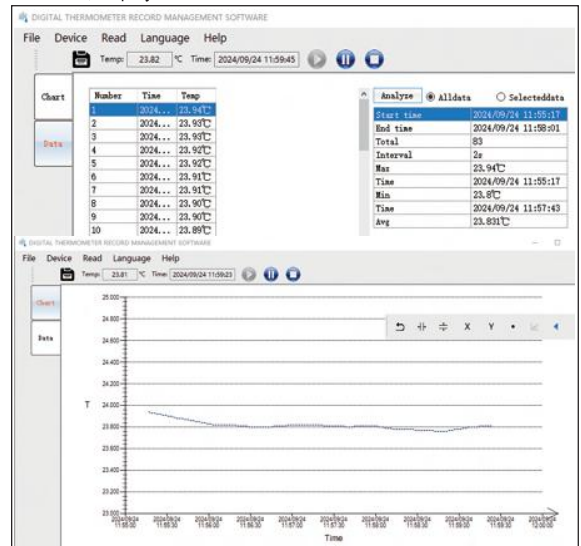
K-type armoured thermocouple with extension wire (optional)

## SPECIFICATION OF MAIN UNIT

<b>Thermocouple type</b>	K/E/N/T/S
<b>Temperature range</b>	K: -200°C~1372°C
	E: -200°C~1000°C
	N: -200°C~1300°C
	T: -200°C~400°C
	S: -50°C~1768°C
<b>Temperature accuracy*</b>	K: ±0.8°C (at -200°C~0°C); ±0.6°C (at 0°C~1372°C)
	E: ±0.7°C (at -200°C~0°C); ±0.5°C (at 0°C~1000°C)
	N: ±0.8°C (at -200°C~0°C); ±0.6°C (at 0°C~1300°C)
	T: ±0.8°C (at -200°C~0°C); ±0.6°C (at 0°C~400°C)
	S: ±1.5°C (at -50°C~0°C); ±1.2°C (at 0°C~1768°C)
<b>Temperature resolution</b>	0.1°C/0.01°C (adjustable)
<b>Annual stability</b>	±8μV
<b>Memory capacity</b>	100,000
<b>Logging interval</b>	2s~99s
<b>Power supply</b>	rechargeable lithium battery, working time≥40h
<b>Operating environment</b>	temperature: -10°C~50°C
	humidity: 0%RH~95%RH (non-condensing)
<b>Dimension</b>	60×63×83mm
<b>Weight</b>	88g

\*Accuracy is specified for ambient temperature between 18°C and 28°C, the above specification includes the error of the cold junction compensation and does not include the error of thermocouple sensor

computer software (included): connect to PC software via data cable to collect, display and store data



## SPECIFICATION OF SENSOR\*\*

Code	Product	Range***	Accuracy	Dimension	Extension cord
0324-KB1	K-type bar armoured thermocouple	-40°C~1100°C	class 1: ±1.5°C or ±0.4%·t	Ø3×500mm	/
0324-KE2	K-type armoured thermocouple with extension wire	-40°C~1100°C	class 1: ±1.5°C or ±0.4%·t	Ø1.5×1000mm	2m

\*\*Other models, temperature ranges and dimensions of thermocouples can be customized

\*\*\*Sensors are consumables and are recommended to be used within 1000°C, beyond that the service life will be reduced

## STANDARD DELIVERY

Main unit	1 pc
K-type bar armoured thermocouple (0324-KB1)	1 pc
Software	1 pc
Power adapter	1 pc

## OPTIONAL ACCESSORY

K-type armoured thermocouple with extension wire	0324-KE2
--	----------